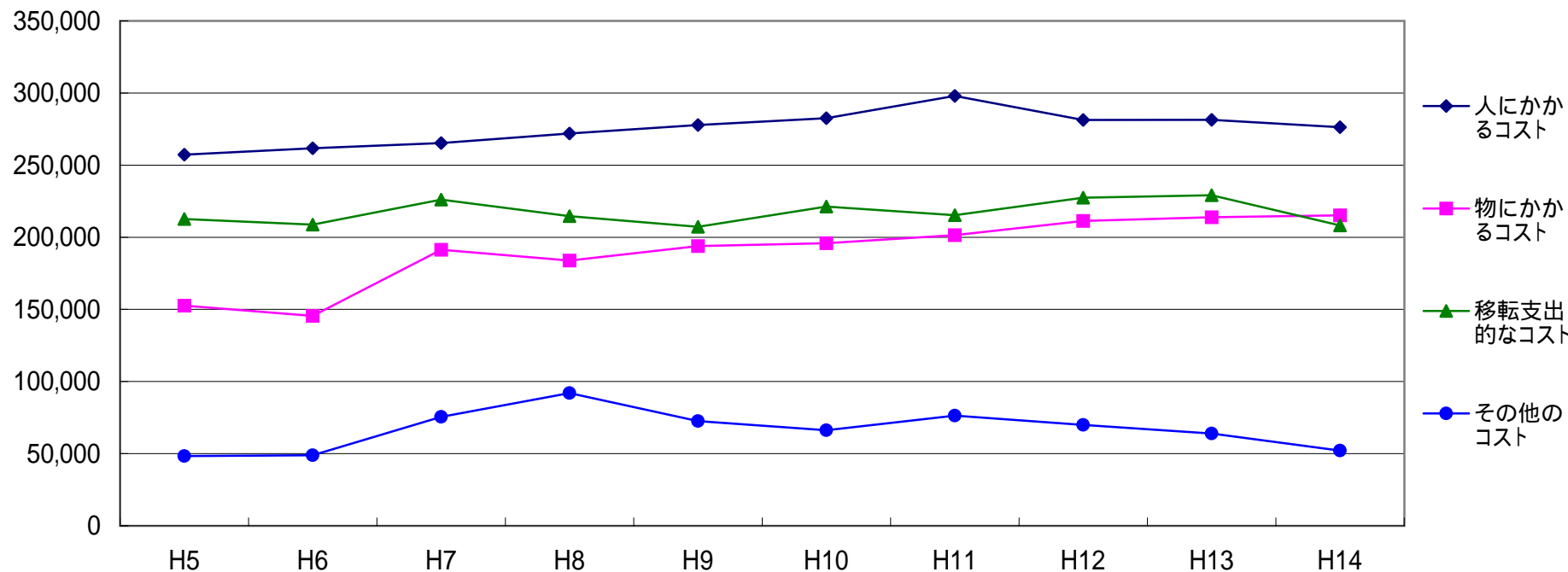


(参考資料7)

性質別行政コストの年度別推移

(単位:百万円)



	H5	H6	H7	H8	H9	H10	H11	H12	H13	H14
人にかかるコスト	257,260 (100.0)	261,683 (101.7)	265,353 (103.1)	271,921 (105.7)	277,781 (108.0)	282,512 (109.8)	298,028 (115.8)	281,323 (109.4)	281,461 (109.4)	276,329 (107.4)
物にかかるコスト	152,607 (100.0)	145,495 (95.3)	191,356 (125.4)	183,882 (120.5)	193,933 (127.1)	195,883 (128.4)	201,457 (132.0)	211,351 (138.5)	213,852 (140.1)	215,236 (141.0)
移転支出的なコスト	212,682 (100.0)	208,810 (98.2)	226,069 (106.3)	214,626 (100.9)	207,236 (97.4)	221,247 (104.0)	215,297 (101.2)	227,452 (106.9)	229,148 (107.7)	208,204 (97.9)
その他のコスト	48,276 (100.0)	48,844 (101.2)	75,498 (156.4)	92,003 (190.6)	72,578 (150.3)	66,215 (137.2)	76,318 (158.1)	69,882 (144.8)	63,927 (132.4)	52,092 (107.9)
合計	670,825 (100.0)	664,832 (99.1)	758,276 (113.0)	762,432 (113.7)	751,527 (112.0)	765,858 (114.2)	791,099 (117.9)	790,008 (117.8)	788,388 (117.5)	751,862 (112.1)