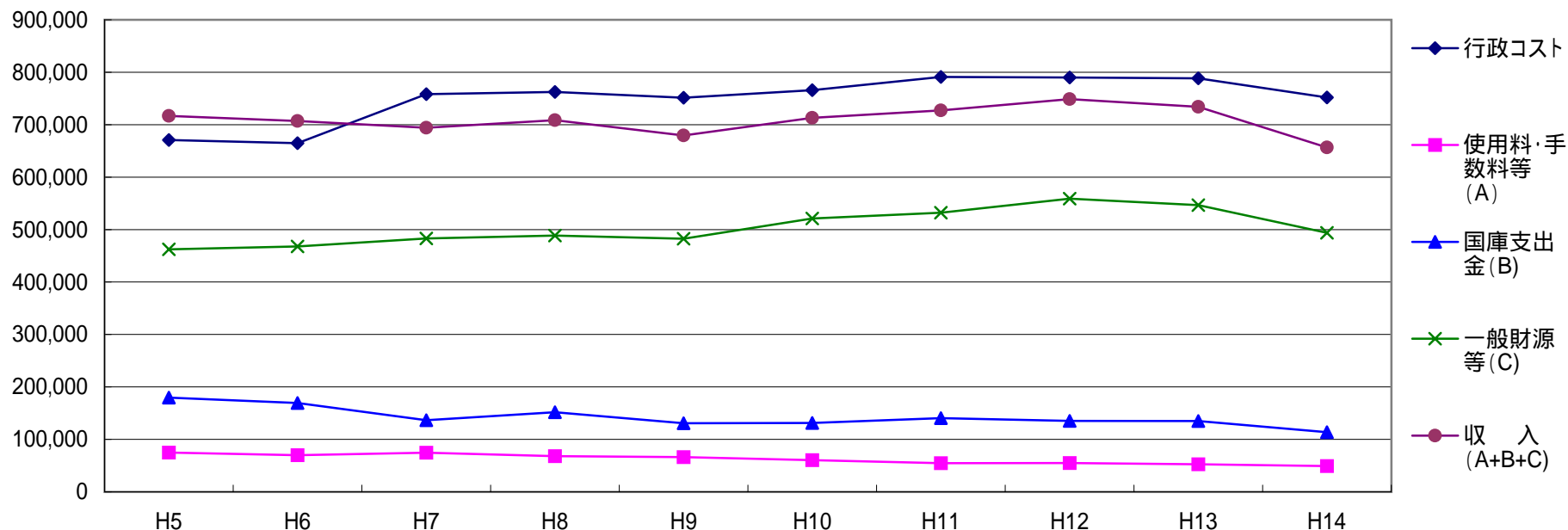


(参考資料6)

行政コスト及び収入の年度別推移

(単位:百万円)



	H5	H6	H7	H8	H9	H10	H11	H12	H13	H14
行政コスト	670,825 (100.0)	664,832 (99.1)	758,276 (113.0)	762,432 (113.7)	751,527 (112.0)	765,858 (114.2)	791,099 (117.9)	790,008 (117.8)	788,388 (117.5)	751,862 (112.1)
使用料・負担金等 * (A)	74,949 (100.0)	69,823 (93.2)	74,438 (99.3)	68,075 (90.8)	66,078 (88.2)	60,480 (80.7)	54,739 (73.0)	54,806 (73.1)	52,387 (69.9)	48,986 (65.4)
国庫支出金 (B)	179,586 (100.0)	169,362 (94.3)	136,552 (76.0)	151,833 (84.5)	130,792 (72.8)	131,402 (73.2)	140,512 (78.2)	135,101 (75.2)	135,069 (75.2)	113,682 (63.3)
一般財源等 (C)	462,271 (100.0)	467,899 (101.2)	483,133 (104.5)	488,594 (105.7)	482,530 (104.4)	521,216 (112.8)	532,112 (115.1)	558,942 (120.9)	546,498 (118.2)	493,858 (106.8)
収入 (A+B+C)	716,806 (100.0)	707,083 (98.6)	694,124 (96.8)	708,501 (98.8)	679,400 (94.8)	713,099 (99.5)	727,363 (101.5)	748,849 (104.5)	733,954 (102.4)	656,526 (91.6)

* 「使用料・負担金等」は使用料、手数料、分担金、負担金、寄附金、繰入金、財産収入、諸収入の計