

Lake Suwa Revitalization Vision (2038 Vision and Goals)

Lake Suwa Environmental Research Center, Nagano Prefecture
Water and Air Environment Division, Environment Department, Nagano Prefecture

Governance, Policy, and
Stakeholder Engagement



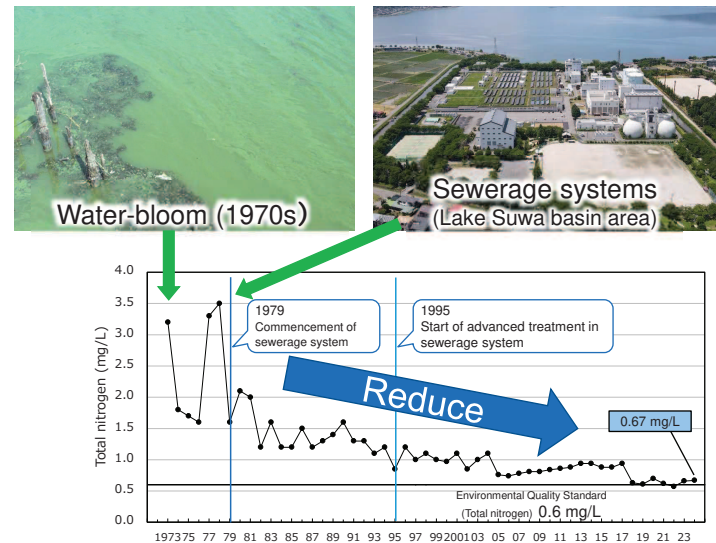
Lake Suwa (Location and Overview)

- Lake Suwa became extremely eutrophic in the 1960s and 1970s due to the inflow of domestic and industrial wastewater.
- Various measures, including the construction of a river basin sewerage system in 1979, have succeeded in improving water quality.
- It has become necessary to address new issues, such as the mass deaths of smelt, the overgrowth of water chestnuts, and the spread of hypoxia in the bottom layer.
- To address these and other issues, Nagano Prefecture formulated "Lake Suwa Revitalization Vision" in 2018 and opened Lake Suwa Environmental Research Center in 2024 to promote research, strengthen information dissemination, promote learning, and strengthen collaboration.

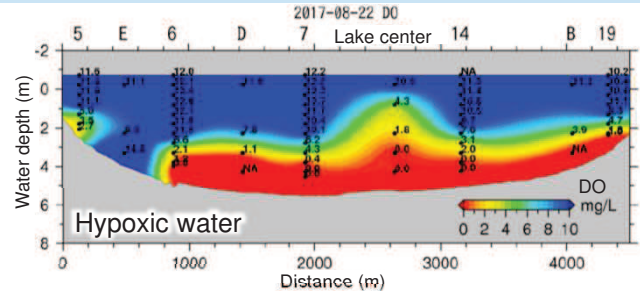


| | |
|----------------------------|--|
| Watershed area | 531.2 km ² |
| Lake area | 13.3 km ² (15.9 km around the lake) |
| Water depth | Max 7.2 m, Average 4.7 m |
| Water storage capacity | ca. 63 million m ³ |
| Residence time | ca. 46 days |
| Number of inflowing rivers | 31 rivers |

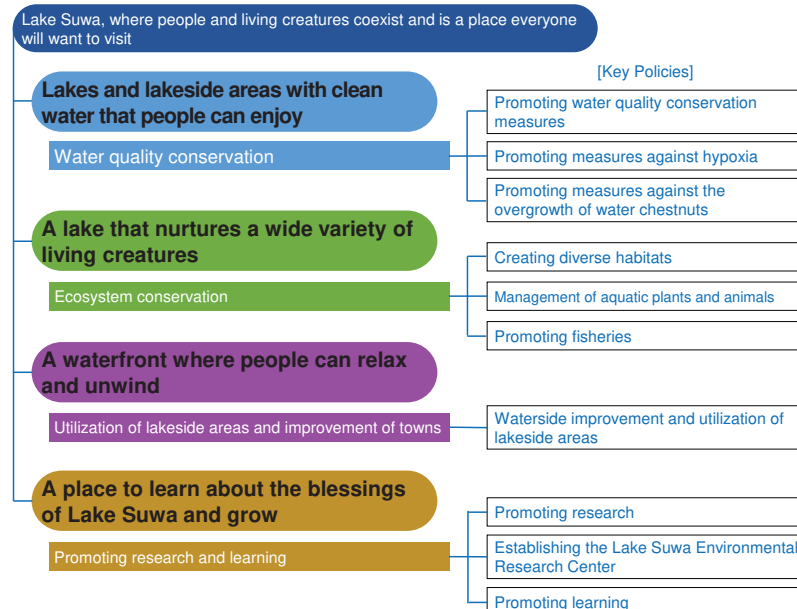
History of water quality improvement



Recent issues in Lake Suwa



Outline of "Lake Suwa Revitalization Vision" (Established 2018, Revised 2023)



Removal of water chestnut



Improvement of cycling road



Lake Suwa Environmental Research Center

Lake Suwa Environmental Research Center
Address Osachi Gongencho4-11-51, Okaya city, Nagano prefecture, 394-0081, Japan
E-mail lskanken@pref.nagano.lg.jp